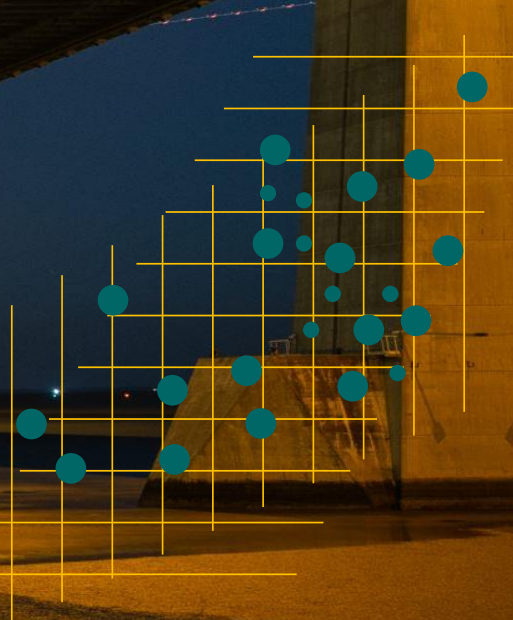
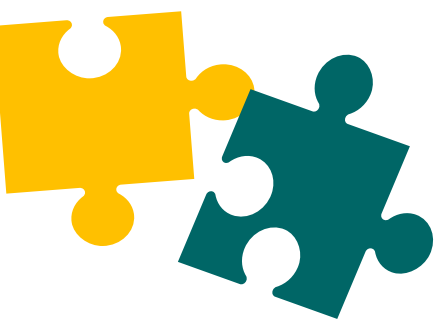




BridgeAngels





└ **BridgeAngels** is a Capital Raising Platform developed by PearlMutual Consulting Ltd in April 2018.

- Targeted at providing SMEs with working capital.
- Focus on companies operating in the Agric Value Chain and in the Manufacturing Industry.
- The goal remains to help businesses grow sustainably
- Structured to go beyond financing – BridgeAngels operates on the principles of **Business**

Incubation

- Financial Advisory
- Business Process Engineering



Goals

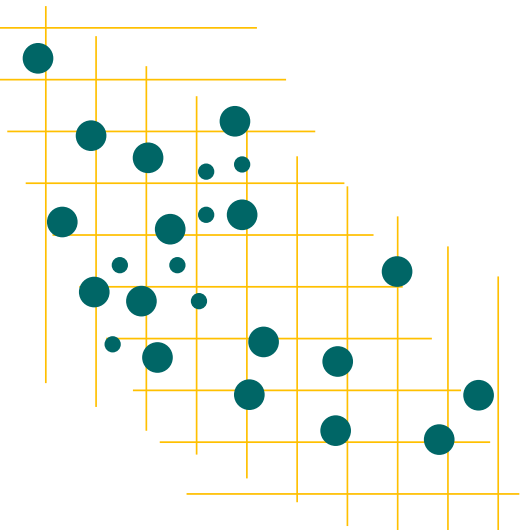


Feed The Nation

Grow Export Revenue

Increase Indigenous Export
Influence

Reduce Economic Disparity





Investment Philosophy



Cash flow lending approach



Social impact inclination



Skewed towards Value addition/creation Business incubation



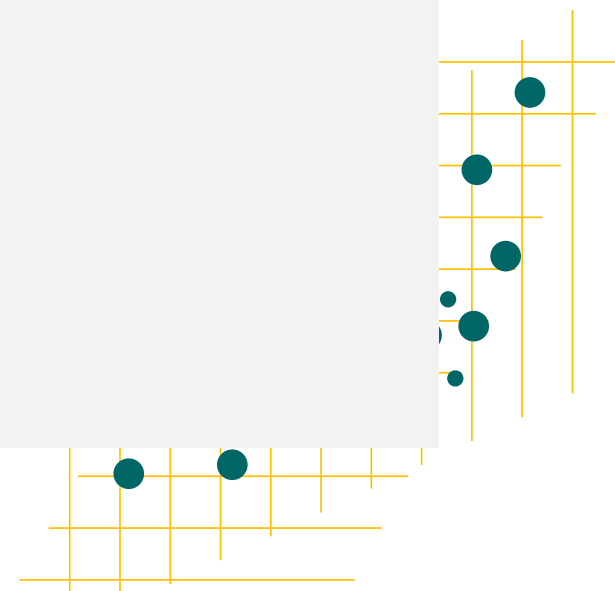
Primarily raise private debt, but can raise equity



Retail investor focus

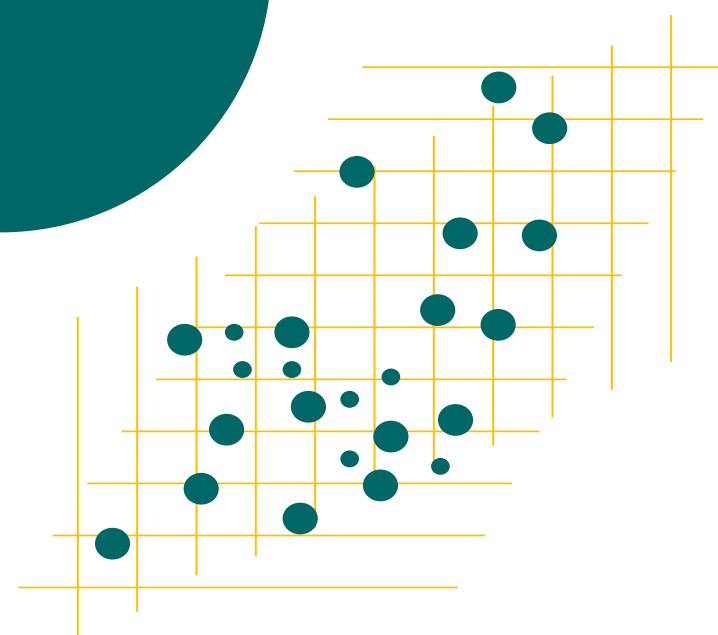
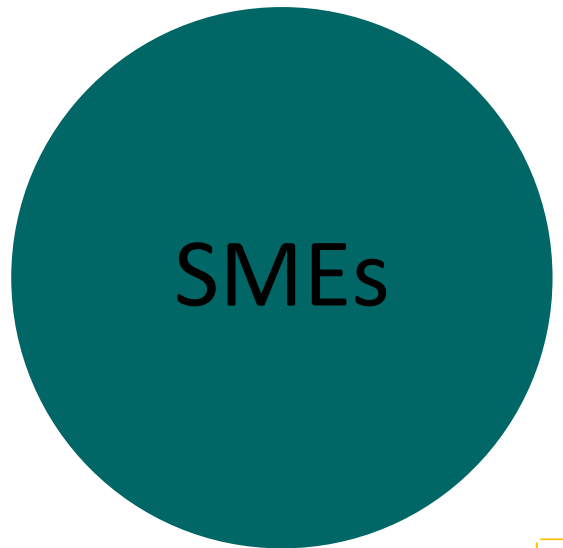


Fund one is open-ended



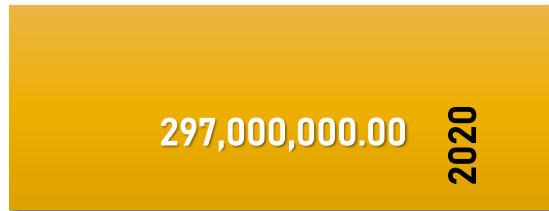


The FundOne Structure



Overview of Investment Activity in 2021

Funds Under Management



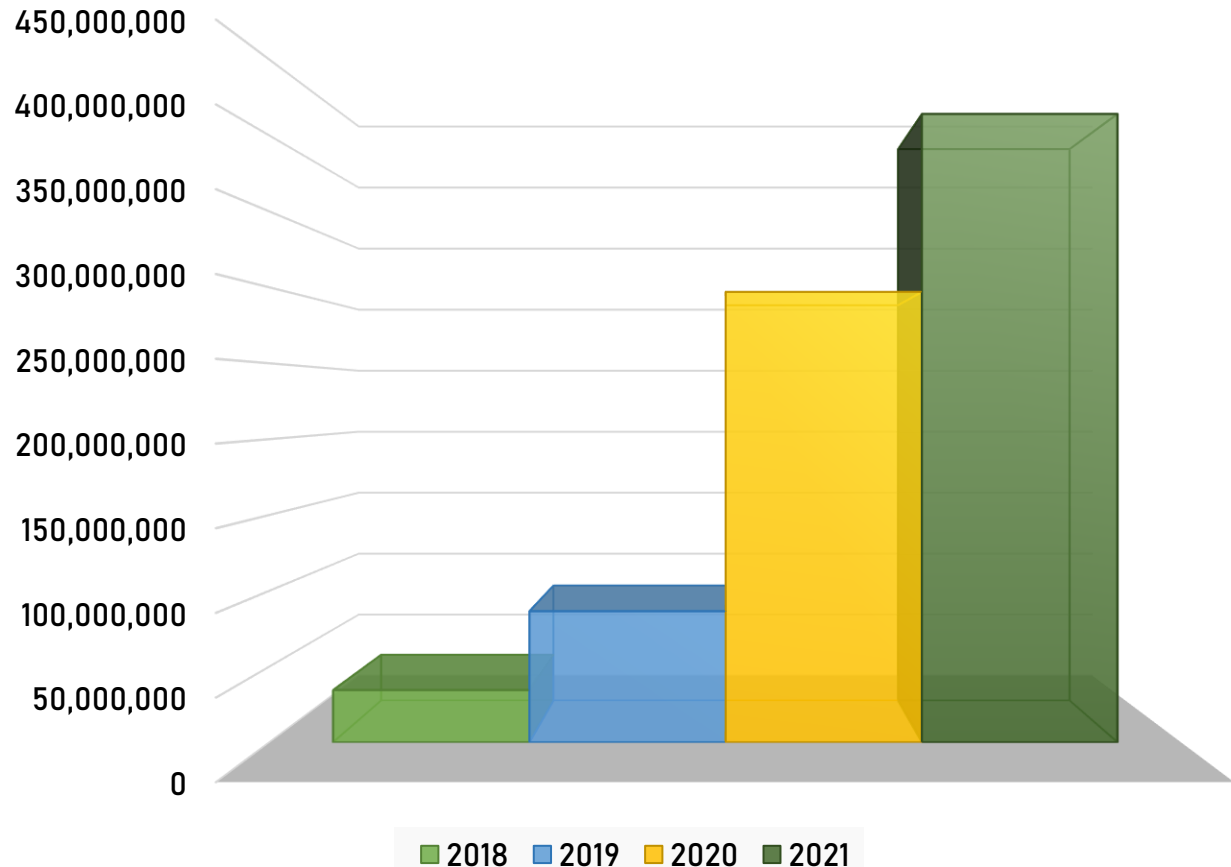
Growth percentage = **49.9%**

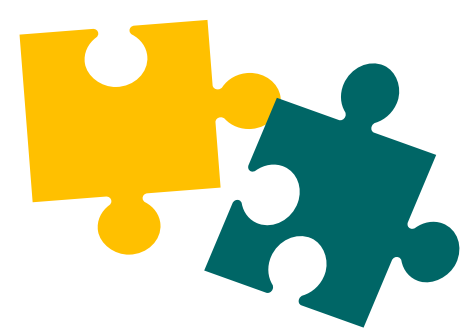
Funding history since 2018 (dollars)

	Manufacturing	Agri Value Chain
Equity	\$197,628.50	
Debt	\$485,230.51	\$1,535,871.90

Total funds raised = **\$2,218,730.90**

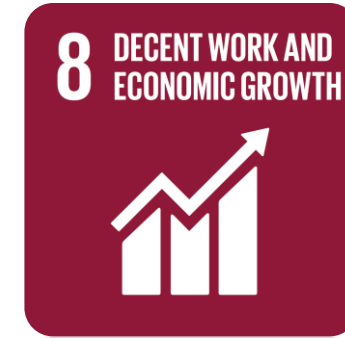
Investment Growth Rate (YoY)

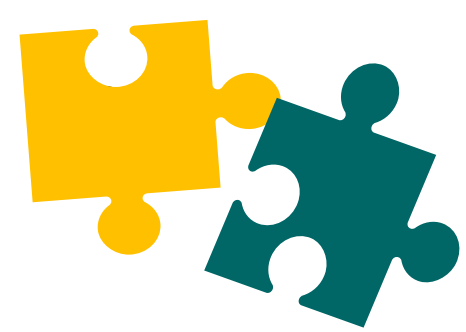




Let's Talk Impact

Our Social Impact





2018	2019	2020
22 Jobs Created	37 Jobs Created	150 Jobs Created
18 Women Impacted*	30 Women Impacted*	60 Women Impacted*
9 Youth Hired	24 Youth Hired	45 Youth Hired
4 SMEs Funded	6 SMEs Funded	12 SMEs Funded

* Direct and Indirect Impact

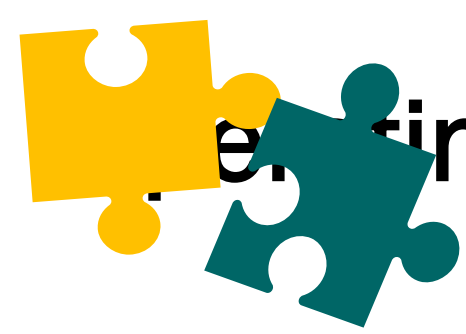
2021

421 Jobs Created

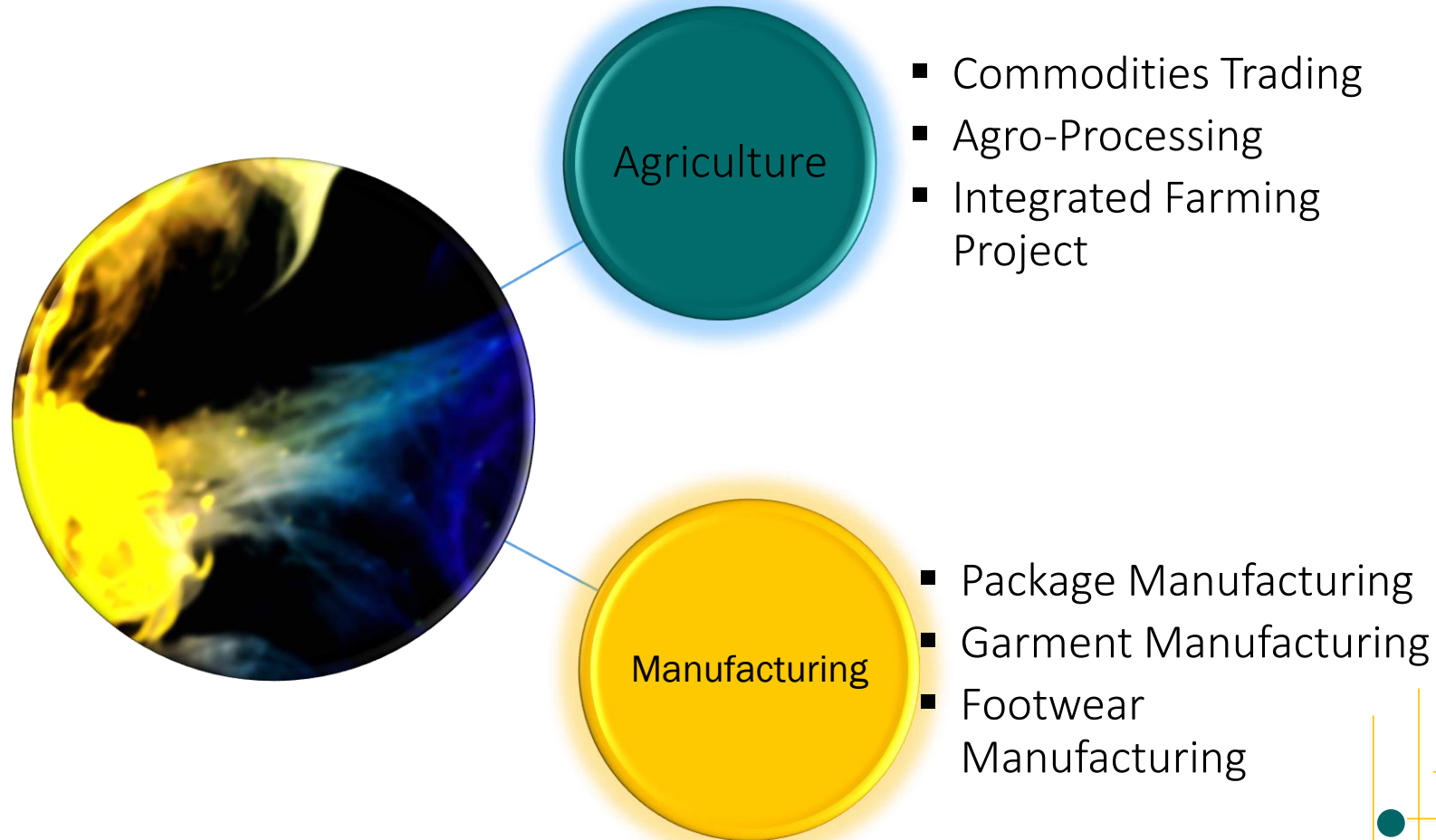
580 Women Impacted*

168 Youth Hired

8 SMEs Funded



Emerging Industries of our SMEs



Some success stories

KEEXS Global Ltd



FUNDS PROVIDED

\$682,331.00 (debt)

CORE ACTIVITIES

Sesame seed and cashew trading

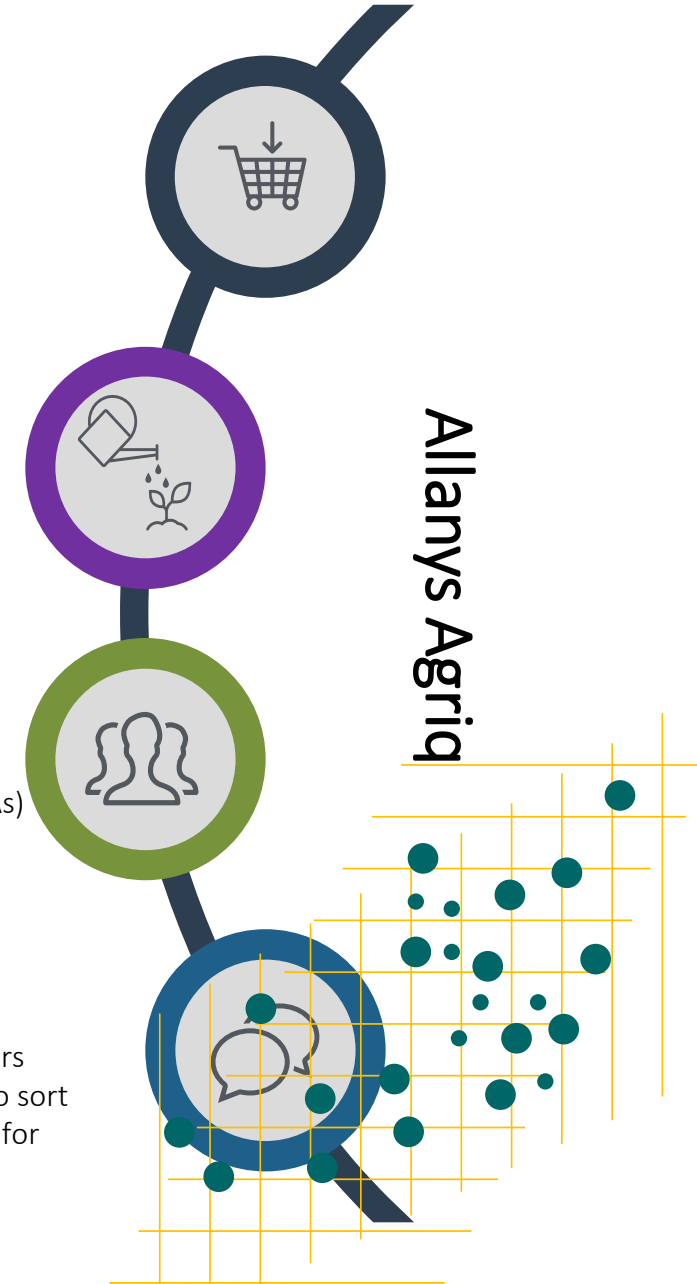
COMPANY DYNAMICS

Commodities are purchased from farmers and Local Buying Agents (LBAs)

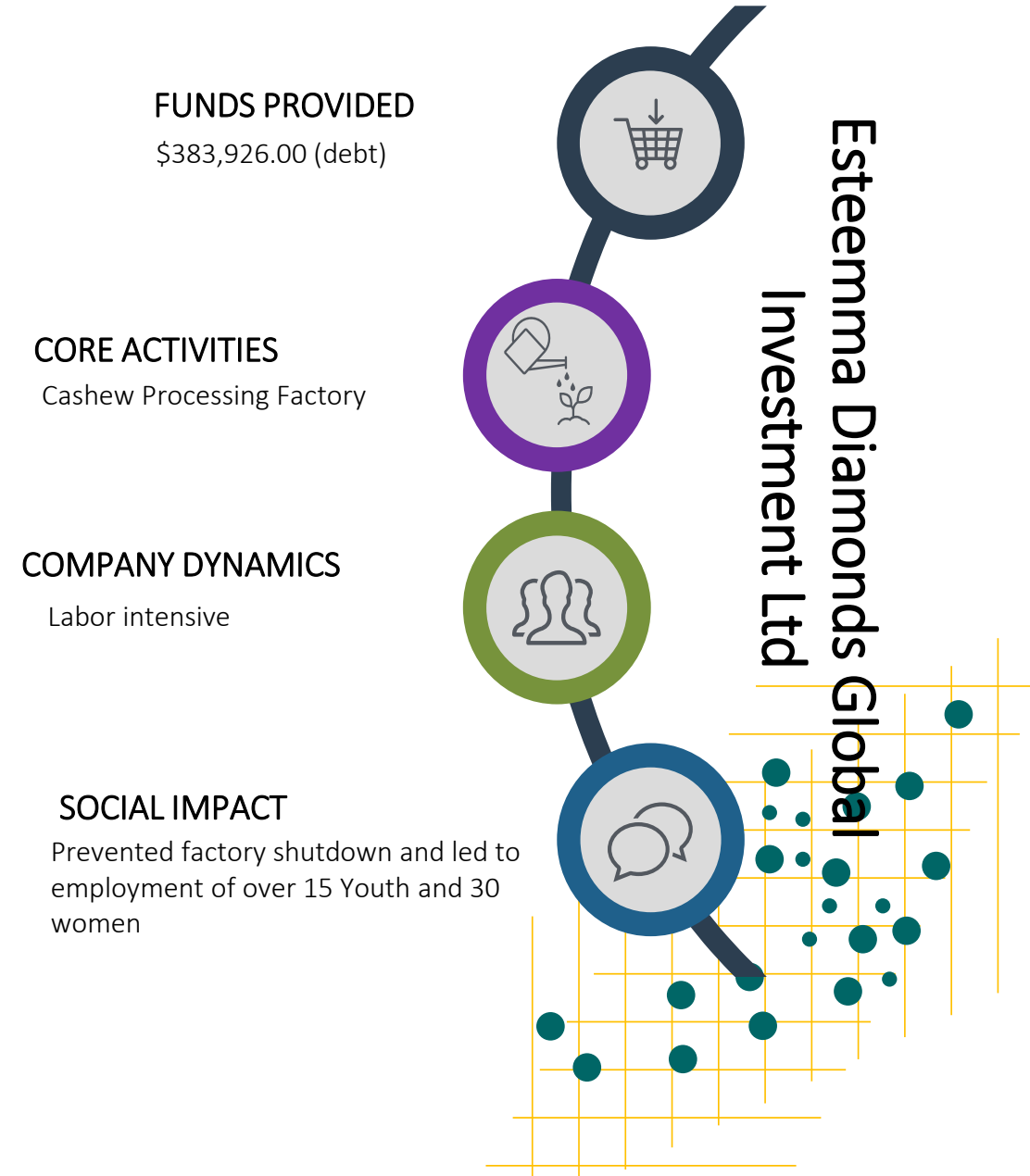
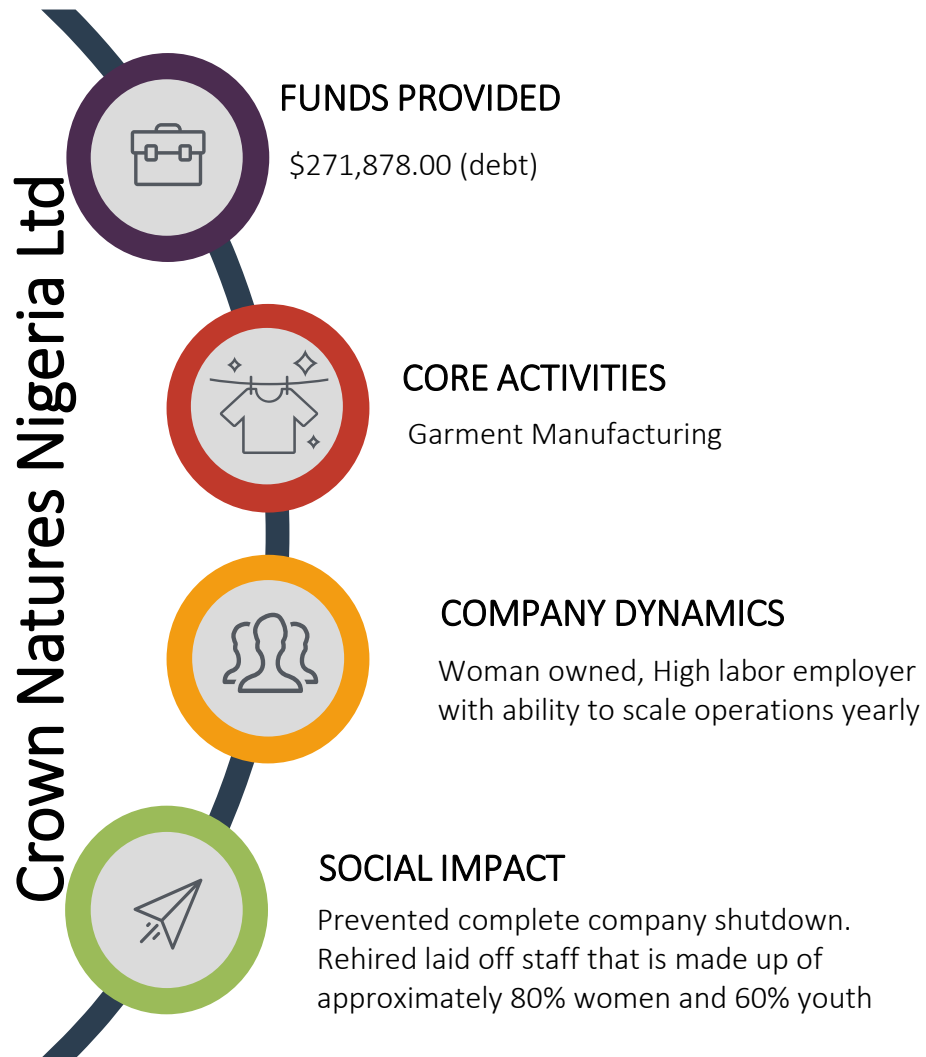
SOCIAL IMPACT

More youth employed as laborers and LBAs , more women hired to sort produce and increased revenue for women farmers.

Allanys Agriq



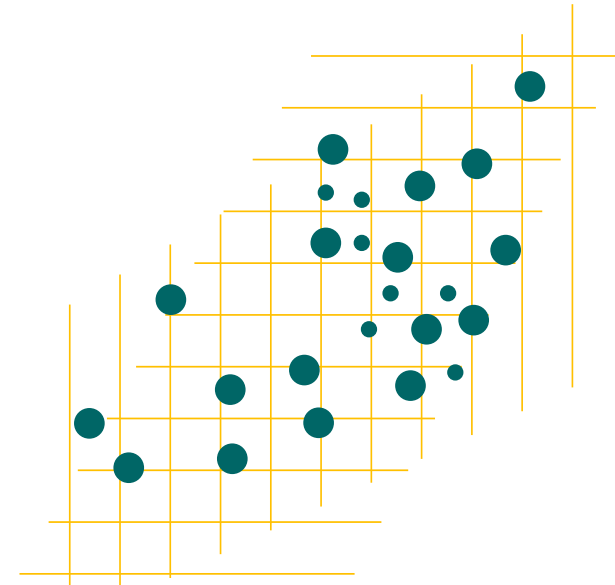
Some success stories





Value Addition: **BridgeAngels**' SME Clinic

- Started 2020 to help solidify the Business Incubation principles of BridgeAngels and as a Business Development tool.
- Targeted towards helping SMEs improve their business operations and grow sustainably through training and networking building.
- We tackled important foundational topics
 - **Finance**
 - **Business Operations**
 - **Business Process Automation**
 - **Human Resource Management.**





Contact Details



Office Address: #1A Stella Ogunleye Str, Off Bosun Adekoya Str, Victoria Island Extension, Oniru, Lagos, Nigeria



Telephone: +2348165789484, +2348023155122,



Website: www.pearlmutual.com



Email: consultant@pearlmutual.com

